



Health & Safety

GeoDyne recently completed an external audit with regards to internal Health & Safety Policy and Procedures and are pleased to announce that we successfully passed and are now a certified SMAS Worksafe Consultant.

This demonstrates our commitment to Health & Safety and enables GeoDyne to email our certificate to companies and work on construction sites requiring Worksafe certification.



GeoDyne is also CSCS approved to Gold Standard. All of GeoDyne's Engineers have passed the Construction Industry Training Board (CITB) and are competent to Regular Visitor status.



Quick Tea-Break Word Search

G	A	R	V	E	T	E	K	Q	M	A	E	S	L	A	O	C
N	L	O	H	A	F	O	U	N	D	A	T	I	O	N	I	O
F	A	G	I	B	O	Z	E	M	I	T	W	R	B	E	P	N
W	X	C	V	R	L	B	O	R	E	H	O	L	E	N	O	T
I	D	H	I	V	I	E	G	T	R	I	L	P	T	V	B	A
N	O	I	Z	I	H	N	V	O	N	A	J	Y	R	I	C	M
D	A	T	W	A	G	T	T	A	I	M	E	A	S	R	O	I
O	K	E	U	N	E	O	I	D	R	R	U	O	F	O	A	N
W	E	N	I	D	Y	N	R	P	N	G	A	S	Z	N	O	A
S	M	O	N	T	R	I	A	L	P	I	T	A	V	M	R	T
A	E	I	O	R	E	T	I	V	I	T	E	M	I	E	E	I
M	N	T	A	I	L	E	G	A	R	A	N	H	Z	N	M	O
P	R	A	L	T	A	N	R	L	M	A	H	I	R	T	E	N
L	E	I	T	N	I	O	N	I	E	M	E	N	I	A	V	M
E	M	D	A	L	N	M	K	D	N	H	P	H	Y	L	Z	E
S	H	E	P	X	O	T	S	A	T	I	N	D	S	A	J	O
K	I	M	R	E	M	E	T	N	T	M	E	K	M	G	Y	
T	A	E	O	A	N	W	J	I	O	N	A	S	J	D	A	K
S	Y	R	B	R	I	P	R	O	B	E	X	T	U	L	F	L
A	V	E	R	E	D	R	E	N	O	R	M	A	S	E	A	L
M	A	X	O	M	E	O	M	A	R	O	T	L	A	I	P	L
Y	E	L	W	U	T	U	N	G	E	A	R	E	M	F	A	I
C	N	I	N	V	E	S	T	I	G	A	T	I	O	N	L	F
O	D	L	F	A	C	E	R	A	A	N	I	F	I	E	R	D
A	N	L	I	N	T	A	N	E	T	E	M	I	L	E	A	N
G	A	V	E	N	O	I	T	A	I	L	V	E	A	R	G	A
R	L	A	L	X	R	F	H	M	N	I	E	D	P	G	E	L
E	I	E	D	E	S	K	S	T	U	D	Y	H	I	V	A	N

- Bentonite
- Probe
- HiViz
- Sampling
- Borehole
- Trial Pit
- Window Sample
- Gravel
- Coal Seam
- Remediation
- Validation
- Gas
- Shear Vane
- Detector
- Contamination
- Investigation
- Landfill
- Greenfield
- Foundation
- Brownfield
- Desk Study
- Environmental

Guess the Invasive Weeds

Do you know your invasive weeds? See if you can match them up. If you are having trouble with any of these weeds on your sites please contact us as we can help.

Ragwort, Japanese Knotweed, Himalayan Balsam and Giant Hogweed



See below for answers.

East Midlands Property Shows 2011

We have booked our Stand for this year so please come and see us at the East Midlands Conference Centre, Nottingham on Friday 11 November - stand 23 for a chat and the chance to be entered into our free prize draw to win a tippie.



1.Giant Hogweed, 2.Japanese Knotweed, 3.Himalayan Balsam, 4.Ragwort



GeoDyne Ltd celebrated our 10th Anniversary in September 2011.

From humble beginnings in 2001, we have grown into a consultancy with a £1 million annual turnover and twelve members of staff.

We have recently been identified by Ground Engineering in the September 2011 Edition of their publication as a Top 50 Geotechnical Consultancy.

We look forward to continuing to build our business, and serving our Clients, over the next ten years.



Issue 5, Autumn 2011

this issue

- What a Waste! **P.1**
- Case Study – Lawley Square **P.2**
- Digging the Route to Chartership **P.3**
- Ten Minute Tea Break **P.4**



What a Waste!

Historically, the redevelopment of Brownfield sites resulted in the removal of excess volumes of material to Landfill, an expensive and frequently unnecessary activity. Similarly, the redevelopment of Greenfield sites resulted in the generation of excess volumes of clean materials that could not readily be used on other sites, as their re-use was governed by Environmental Permits or Waste Exemptions.

CL:AIRE (Contaminated Land: Applications In Real Environments - an independent not for profit organisation) has recently published Version 2 of 'The Definition of Waste: Development Industry Code of Practice'. This enables the sustainable re-use of materials both on the site of origin, and more importantly by direct transfer between sites, thereby delivering financial, time, social and environmental benefits to the developer and wider society.

The preparation of Materials Management Plans is an integral part of the Code of Practice. These must be reviewed by an independent Qualified Person, who must be of Chartered Status and have undertaken suitable training at CL:AIRE.

Jason Hollands, Director of GeoDyne is a Qualified Person registered with CL:AIRE (QP112). At the time of writing there are approximately 200 Qualified Persons in the UK.

GeoDyne Ltd are able to prepare detailed Materials Management Plans (MMPs), typically in combination with a Remediation Method Statement (RMS) for a site, and prepare a Qualified Person declaration for submission to the Environment Agency.

Richard Spencer commented "GeoDyne's ability to prepare MMPs and more importantly undertake the role of the Qualified Person enables us to assist Clients with their Waste Management Strategies, saving them time and money, whilst delivering on key environmental performance indicators and ensuring sustainable re-use of materials on site".

Contact: Jason Hollands / Richard Spencer

Contact: Paul Kershaw

GeoDyne Limited
The Granary, Church Lane
Thrumpton, Nottingham NG11 0AX
Tel: 0115 983 0006 Fax: 0115 983 0009
email: info@geodyne.co.uk



GeoDyne Limited
Silverhill Court, Radbourne, Derby DE6 4LY
Tel: 01332 824115 Fax: 01332 824970
email: info@geodyne.co.uk



Top 50 Consultancy

GeoDyne Ltd is currently celebrating being listed in a recent Ground Engineering Geotechnical Services File Report published in September 2011.

In the category of Top Consultants, Ground Engineering identified GeoDyne Ltd to be a Top 50 UK Geotechnical Consultancy (=34th) based on our annual turnover.

GeoDyne Ltd Director Jason Hollands stated "We are delighted that all our hard work in these difficult times has confirmed our position in the market. We are well placed to continue our programme of organic growth using retained working capital. This ensures the business has firm foundations whilst enabling a flexible proactive approach in the future. We will continue to strive for excellence in all aspects of our business and deliver our Clients the great value solutions they require".

CASE STUDY – Lawley Square, Telford – Coal Workings

LOCATION: Lawley Square, Telford
CLIENT: Henry Davidson Developments Limited & Ironstone Development Group (Lead Developer)
DESCRIPTION: Commercial centre within an area proposed for residential development
OUR ROLE: Design & Implement detailed Site Investigation for £20million commercial development

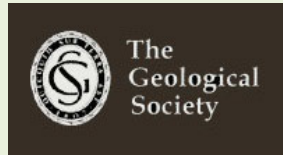
GeoDyne has designed and implemented a detailed site investigation of land proposed for a commercial centre within a larger residential development. Site investigation works included the use of cable percussive boreholes, window sampling boreholes, trial pitting and rotary water flush drilling. Geotechnical and environmental soils testing was completed, together with a detailed gas monitoring programme. The site was also potentially undermined by shallow coal workings and investigation works included drilling to identify the locations of shafts, presence of coal and potential workings.



GeoDyne obtained sufficient information to recommend various foundation options on variable engineered fill materials up to depths in excess of 8m. Localised anomalies (i.e. buried highwalls associated with former coal opencast workings) were also identified in sufficient time to allow our Client to take into consideration potential abnormal development costs.



Digging the Route to Chartership



We are pleased to announce that during 2011, two members of the GeoDyne team achieved Chartered status in their respective fields. Paul Kershaw (our Associate in Derby) is now a Chartered Geologist and David Hooton (a Senior Engineer in Nottingham) is now a Chartered Water and Environment Manager as well as a Chartered Environmentalist. This article provides a brief overview of the path to becoming a Chartered Geologist.

The application process to achieve Chartered Geologist status (awarded by the Geological Society) starts with the candidate choosing their field of expertise from a diverse range of geological topics. The candidate is then required to produce a Demonstration of Competence report relevant to the Chartership Criteria and submit a Professional Report, with both reports specifically referring to their chosen supporting documents.

Paul's chosen area of expertise was Engineering Geology and he explains...*"It is imperative to ensure that your supporting documents showcase your field of expertise and can be put into the geological context to emphasise your competence. The selection of the supporting documents is a measure of professional skill and is important to demonstrate your suitability to become a Chartered Geologist"*.

In addition to the reports, the candidate is required to submit CPD records, undertake a viva examination and provide evidence of a commitment to professionalism in relation to the Geological Society Code of Conduct.

Jason Hollands (Company Director) says *"We are very proud of the Chartered status achieved by Paul and David in the last 12 months. This is an endorsement of Paul and David's commitment to pursuit of Chartership and a testament to GeoDyne's genuine commitment to training and mentoring in this process"*.



Access all Areas

GeoDyne has recently completed intrusive works at the site of a proposed extension to the Records Office of Derbyshire County Council. The ground conditions dictated that a rotary coring rig would be required to enable foundation design but there was no direct rig access onto the site due to the presence of retaining walls. By working closely with our subcontractors, we were able to mobilise a mini rotary coring rig onto the site following construction of a temporary ramp so enabling the ground conditions to be fully characterized.



Meet The Staff

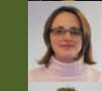
GeoDyne is proud of our staff, many of which have been with us for a considerable number of years.

Below is a list of our staff at each of our offices.

Derby



Paul Kershaw
Associate



Clare Houghton
Geo-Environmental Engineer

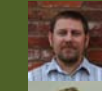


Steve Sellers
Geo-Environmental Engineer



Chris Harris
Graduate Engineer

Nottingham



Jason Hollands
Director



Richard Spencer
Director



Phil Anelay
Principal Engineer



Lisa Daniels
Office Manager



David Hooton
Senior Engineer



Chris Paling
Senior Engineer



Gareth Smith
Senior Engineer



Patrick Norwood
Graduate Engineer

We've worked with a diverse customer base. How can we help you?

Nottingham: 0115 983 0006
Derby: 01332 824115